



GMT MONTHLY MEMBERSHIP PROGRESS REPORT

Results as of: 4/30/2019

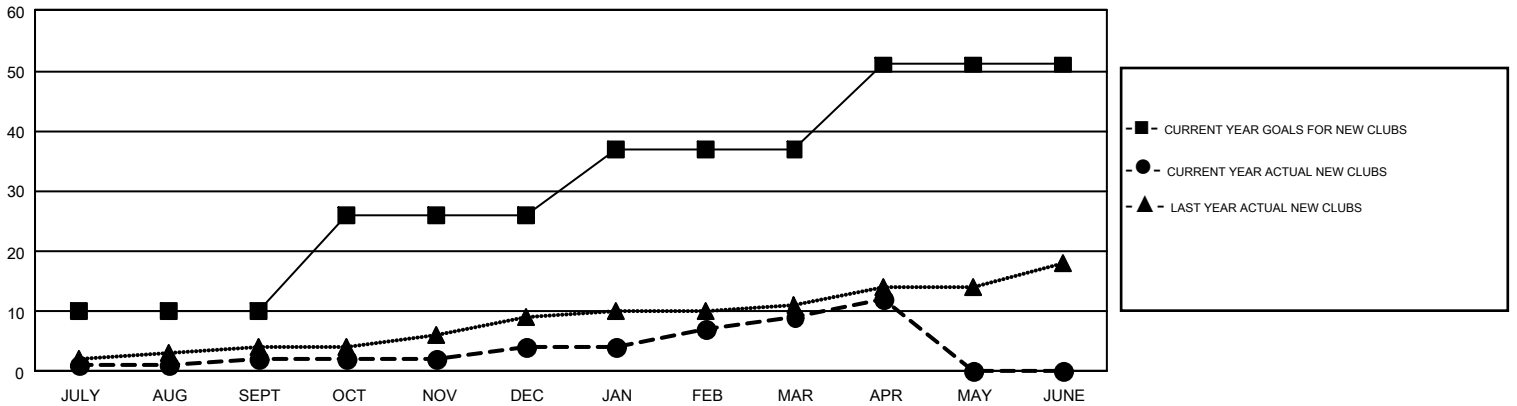
GMT Constitutional Area 1, Group E

GMT: CARLTON LLOYD

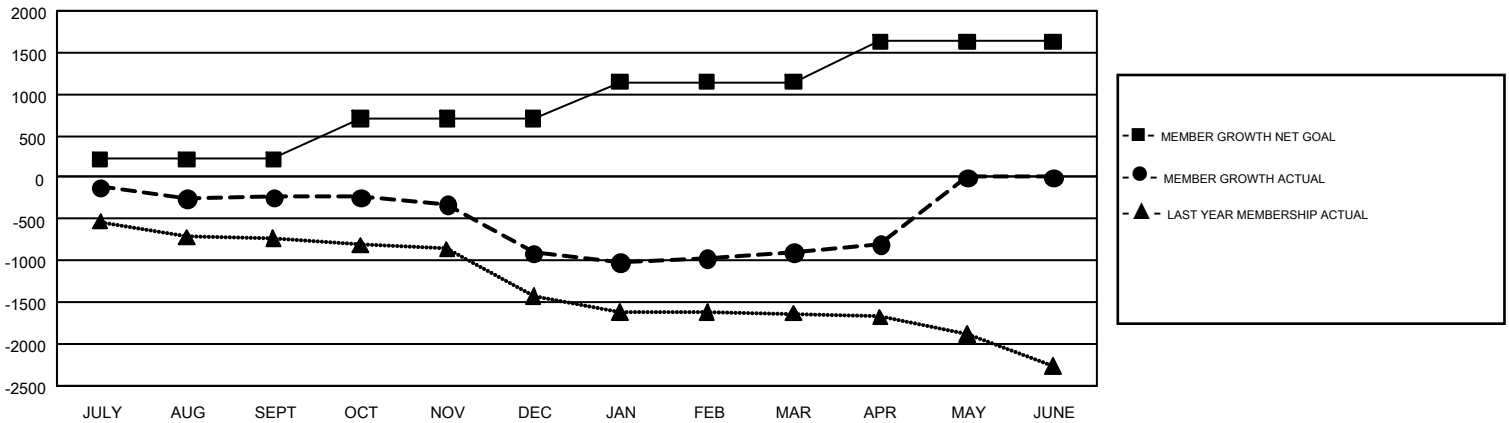
REPORT DOES NOT INCLUDE CLUBS IN UNDISTRICTED AREAS.

Clubs				Members			
RESULTS FOR 2018-2019				RESULTS FOR 2018-2019			
QUARTER	NEW CLUB GOAL	NEW CLUBS	DROPPED CLUBS	QUARTER	MEMBER GROWTH NET GOAL	MEMBER GROWTH ACTUAL	DROPPED MEMBERS ACTUAL (including transfers)
JULY/AUG/SEPT	10	2	17	JULY/AUG/SEPT	216	941	1,001
OCT/NOV/DEC	16	2	19	OCT/NOV/DEC	494	963	1,511
JAN/FEB/MAR	11	5	5	JAN/FEB/MAR	434	1,105	996
APR/MAY/JUNE	14	3	1	APR/MAY/JUNE	489	482	357

GOALS AND ACTUAL NEW CLUBS CUMULATIVE



GOALS AND ACTUAL MEMBERS CUMULATIVE



DROPPED CLUBS: 42	829 CLUBS OF 1,546 ADDED 1 OR MORE NEW MEMBERS	GENDER DISTRIBUTION MALE 22,605 (62.77%) FEMALE 13,407 (37.23%)
DROPPED MEMBERS DECEASED 503 CLUB CANCELLED 263 OTHER 3,092 TOTAL 3,858	CLICK HERE FOR CUMULATIVE MEMBERSHIP DATA	TOTAL FAMILY UNIT MEMBERS 6,772 FAMILY MEMBERS PAYING HALF DUES 3,473